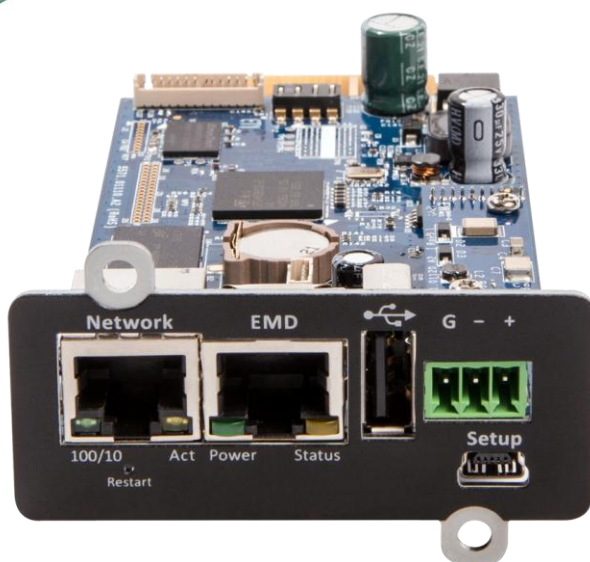


USHA 系列產品

快速安裝指南



版本: V1.00

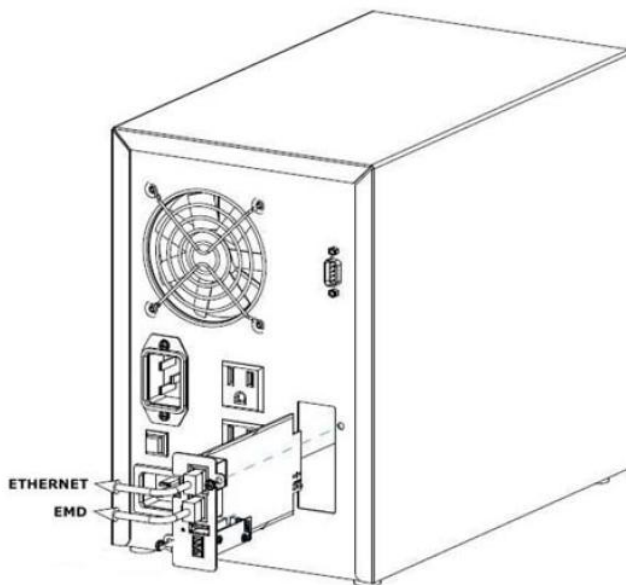
日期: 十二月, 2018

安裝指南

本安裝指南提供了在 UPS 上安裝 USHA 的說明。有關於產品其他的使用說明，請參閱包裝中內附的光碟片中的“使用手冊”。

安裝步驟

1. 將 USHA 卡插入 UPS 卡槽
2. 鎖緊 USHA Card 固定架上的螺絲
3. 取得一工作站 (Microsoft Windows 7 或以上的版本)
4. 將網路線插入 USHA 卡的網路孔



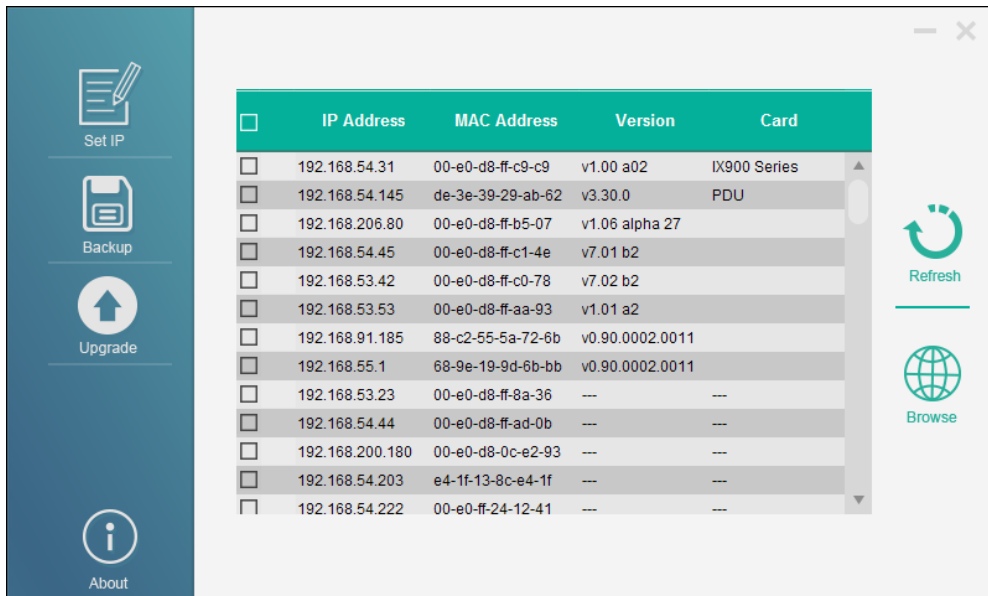
5. 在您的 PC/Server 上安裝 USHA 升級軟體

從產品光碟片中找出 “USHA FITility v1.xx.exe”檔案，並執行安裝程式將升級軟體安裝於您的 PC/Server 上

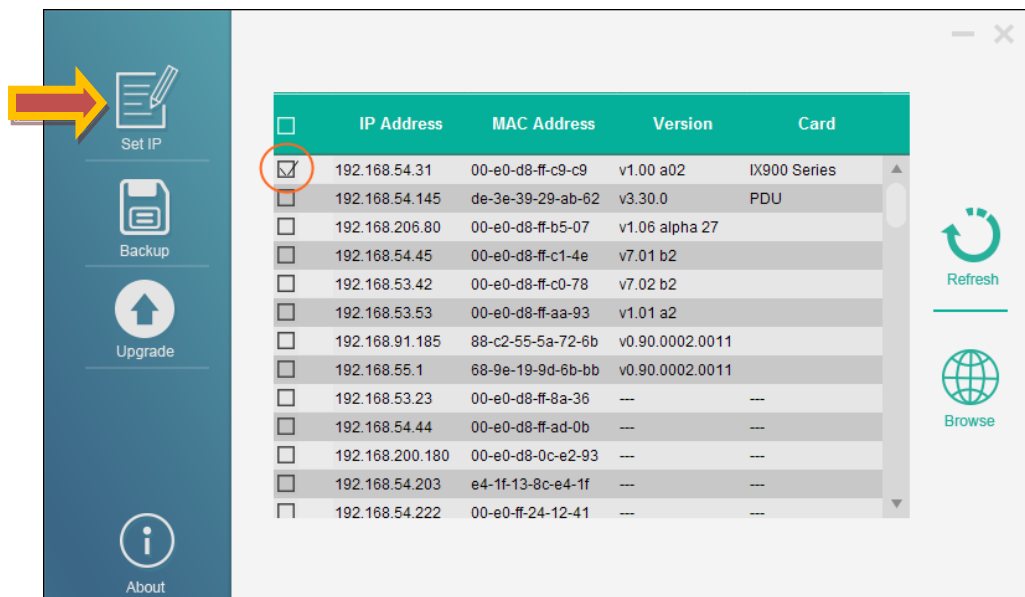


USHA FITILITY1.00.15.exe
USHA FITILITY Installer
Foxconn Interconnect Technology ...

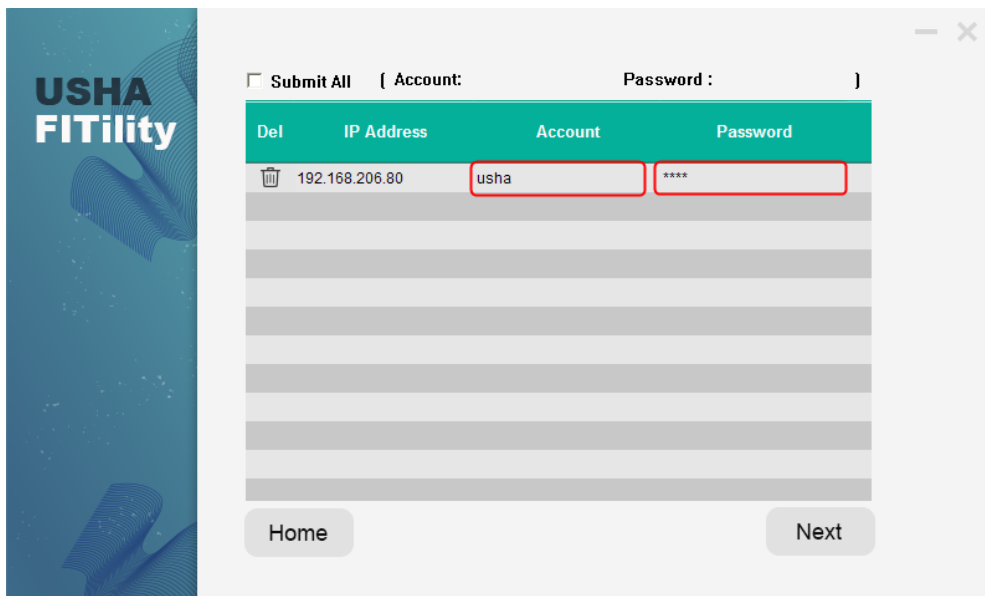
6. 安裝後請執行 USHA FITility，軟體開啟後將自動搜尋您網路上的 USHA 卡



7. 如果需要，可透過“Set IP”功能將 IP 改成與您的區域網路相同網段。請先選取欲修改的 USHA 卡，然後點擊“Set IP”進入此功能



8. 輸入 USHA 卡之帳號(Account) 及密碼>Password)，預設值為 usha/admin



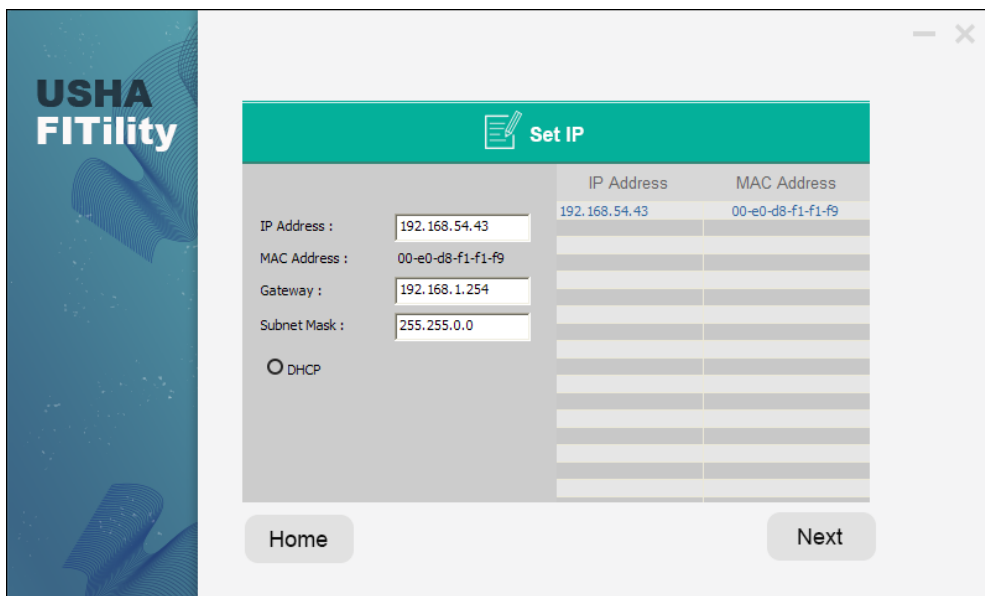
USHA FITility

☐ Submit All [Account: Password :]

Del	IP Address	Account	Password
	192.168.206.80	usha	****

Home Next

9. 輸入新的設定值後點擊 “Next”，以完成此設定



USHA FITility

Set IP

IP Address : 192.168.54.43

MAC Address : 00-e0-d8-f1-f1-f9

Gateway : 192.168.1.254

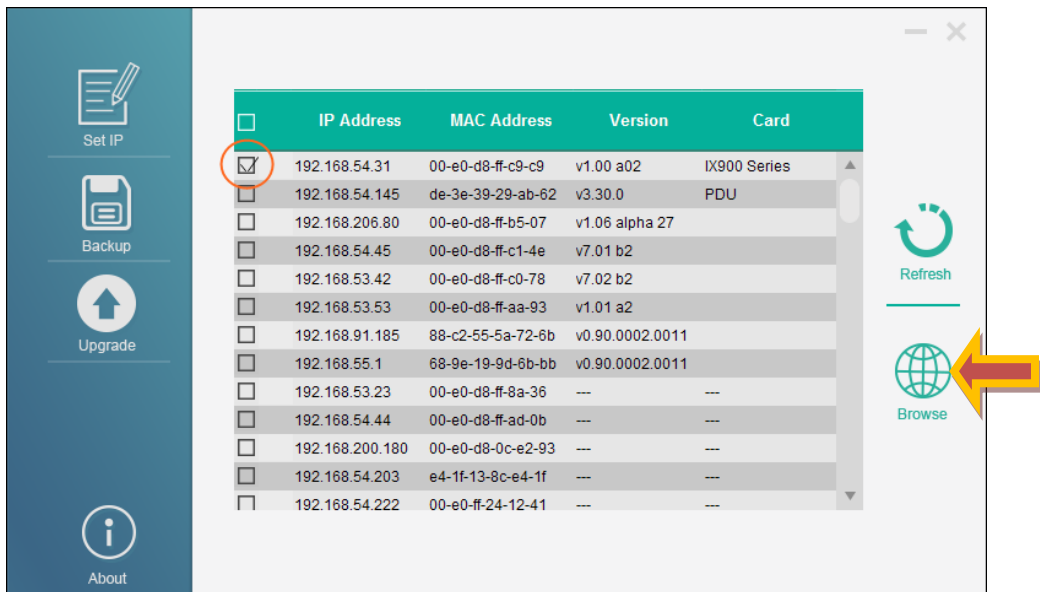
Subnet Mask : 255.255.0.0

☐ DHCP

IP Address	MAC Address
192.168.54.43	00-e0-d8-f1-f1-f9

Home Next

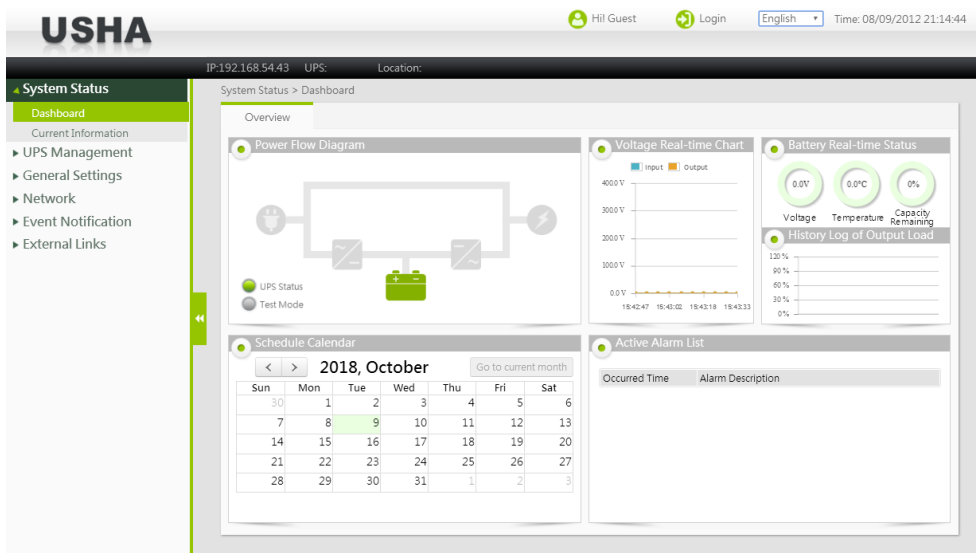
10. 選取您的 USHA 卡後點擊 "Browse"，可打開網頁瀏覽器並瀏覽 UPS 資訊



The screenshot shows the USHA web interface. On the left is a sidebar with icons for Set IP, Backup, Upgrade, and About. The main area displays a table of UPS cards. The first card is selected with a checkbox. A red arrow points to the 'Browse' button on the right.

	IP Address	MAC Address	Version	Card
<input checked="" type="checkbox"/>	192.168.54.31	00-e0-d8-ff-c9-c9	v1.00 a02	IX900 Series
<input type="checkbox"/>	192.168.54.145	de-3e-39-29-ab-62	v3.30.0	PDU
<input type="checkbox"/>	192.168.206.80	00-e0-d8-ff-b5-07	v1.06 alpha 27	
<input type="checkbox"/>	192.168.54.45	00-e0-d8-ff-c1-4e	v7.01 b2	
<input type="checkbox"/>	192.168.53.42	00-e0-d8-ff-c0-78	v7.02 b2	
<input type="checkbox"/>	192.168.53.53	00-e0-d8-ff-aa-93	v1.01 a2	
<input type="checkbox"/>	192.168.91.185	88-c2-55-5a-72-6b	v0.90.0002.0011	
<input type="checkbox"/>	192.168.55.1	68-9e-19-9d-6b-bb	v0.90.0002.0011	
<input type="checkbox"/>	192.168.53.23	00-e0-d8-ff-8a-36	---	---
<input type="checkbox"/>	192.168.54.44	00-e0-d8-ff-ad-0b	---	---
<input type="checkbox"/>	192.168.200.180	00-e0-d8-0c-e2-93	---	---
<input type="checkbox"/>	192.168.54.203	e4-1f-13-8c-e4-1f	---	---
<input type="checkbox"/>	192.168.54.222	00-e0-ff-24-12-41	---	---

11. 網頁瀏覽器將呈現"監控儀表板"頁面



The screenshot shows the USHA web interface. The top bar displays 'USHA' and user information. The left sidebar shows 'System Status' and 'Dashboard'. The main area displays the 'System Status > Dashboard' page, which includes a Power Flow Diagram, Voltage Real-time Chart, Battery Real-time Status, Schedule Calendar, and Active Alarm List.

System Status > Dashboard

Overview

- Power Flow Diagram:** Shows a diagram of the UPS system with input and output power flow.
- Voltage Real-time Chart:** A line graph showing input and output voltage over time. The y-axis ranges from 0.0V to 400.0V. The x-axis shows time from 18:42:47 to 18:43:33.
- Battery Real-time Status:** Displays three circular gauges for Voltage (0.0V), Temperature (0.0°C), and Capacity Remaining (0%). Below these is a History Log of Output Load showing a bar chart of load percentage over time.
- Schedule Calendar:** A calendar for October 2018. The current date is the 9th. The calendar shows days of the week and dates from 1 to 31.
- Active Alarm List:** A table with columns for Occurred Time and Alarm Description. It is currently empty.